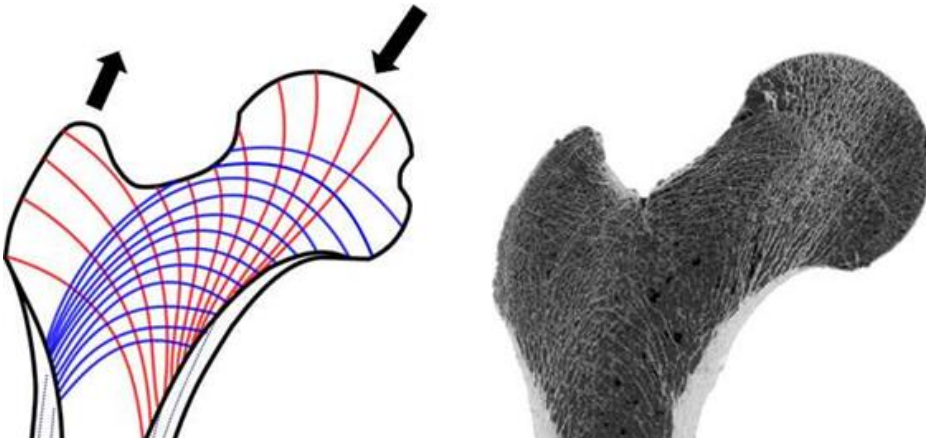


# Introduction to Biomechanics (4 SWS)

Wintersemester 2019/20

## • Content

- Introduction to the Biomechanics of the Human Movement
  - Human body kinematics
  - Human body kinetics
  - Analysis of human movement: numerical and experimental methods
  - Gait analysis
- Mechanics of Biological Tissues
  - Structure and function of biological tissues
  - Mechanical properties of biological tissues
  - Mechanical testing of biological tissues
  - Modelling and simulation of biological tissues



## • Requirements for participation and examination

Successful completion of courses in engineering mechanics and materials science

## • Module Components

Lecture: Fridays, 10-12:00, room H 3006

Seminar: Wednesdays, 10-12:00, room H 3007

- **Contact Person** Frau Dr.-Ing. Melika Mohammadkhah (melika.mohammadkhah@tu-berlin.de)